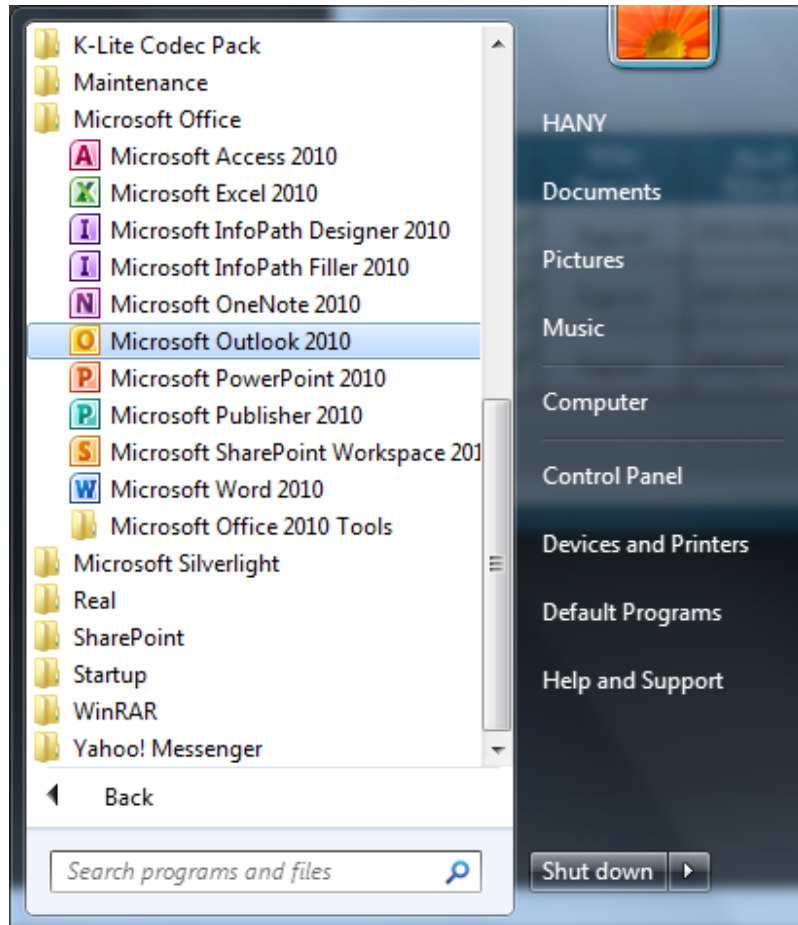


## \*Non domain joined machines\*



Microsoft Outlook 2010 Startup



## Microsoft Outlook 2010 Startup

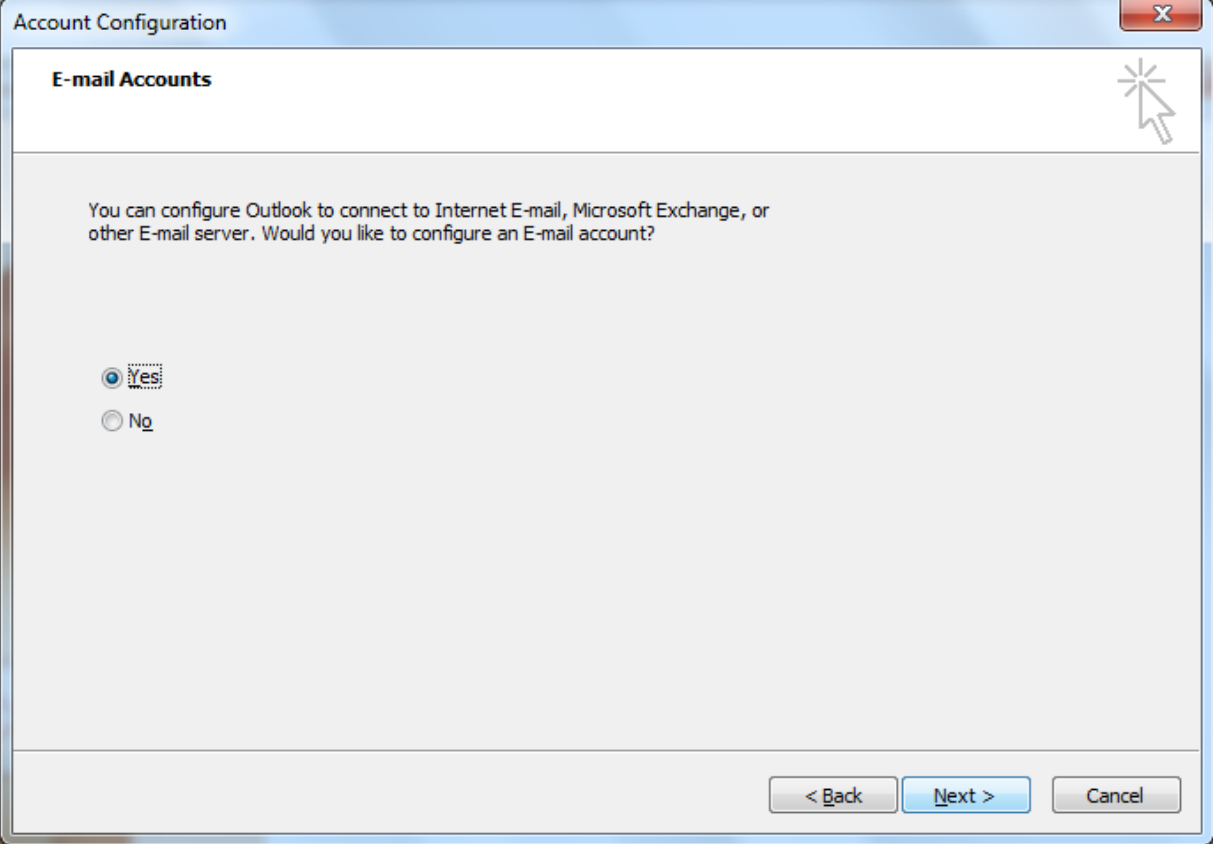
Welcome to the Microsoft Outlook 2010 Startup Wizard, which will guide you through the process of configuring Microsoft Outlook 2010.




< Back

Next >

Cancel



Add New Account X

**Auto Account Setup**  
Click Next to connect to the mail server and automatically configure your account settings. 

**E-mail Account**

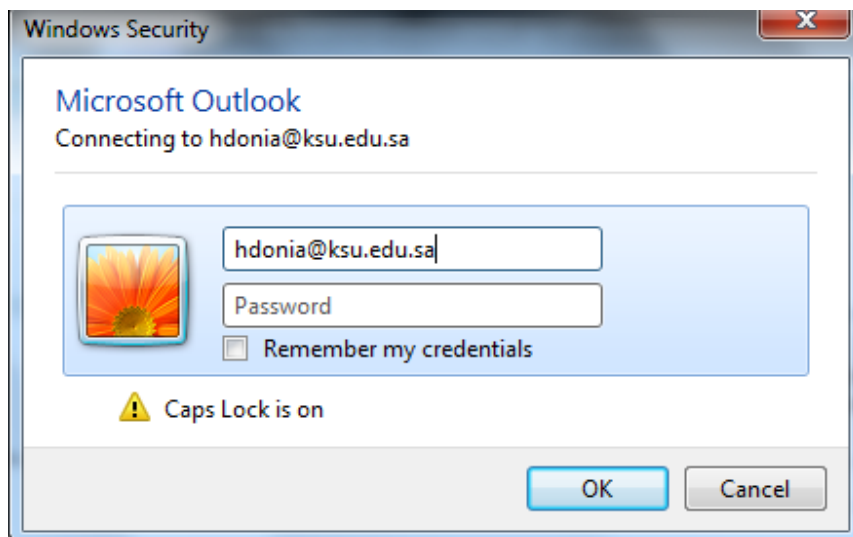
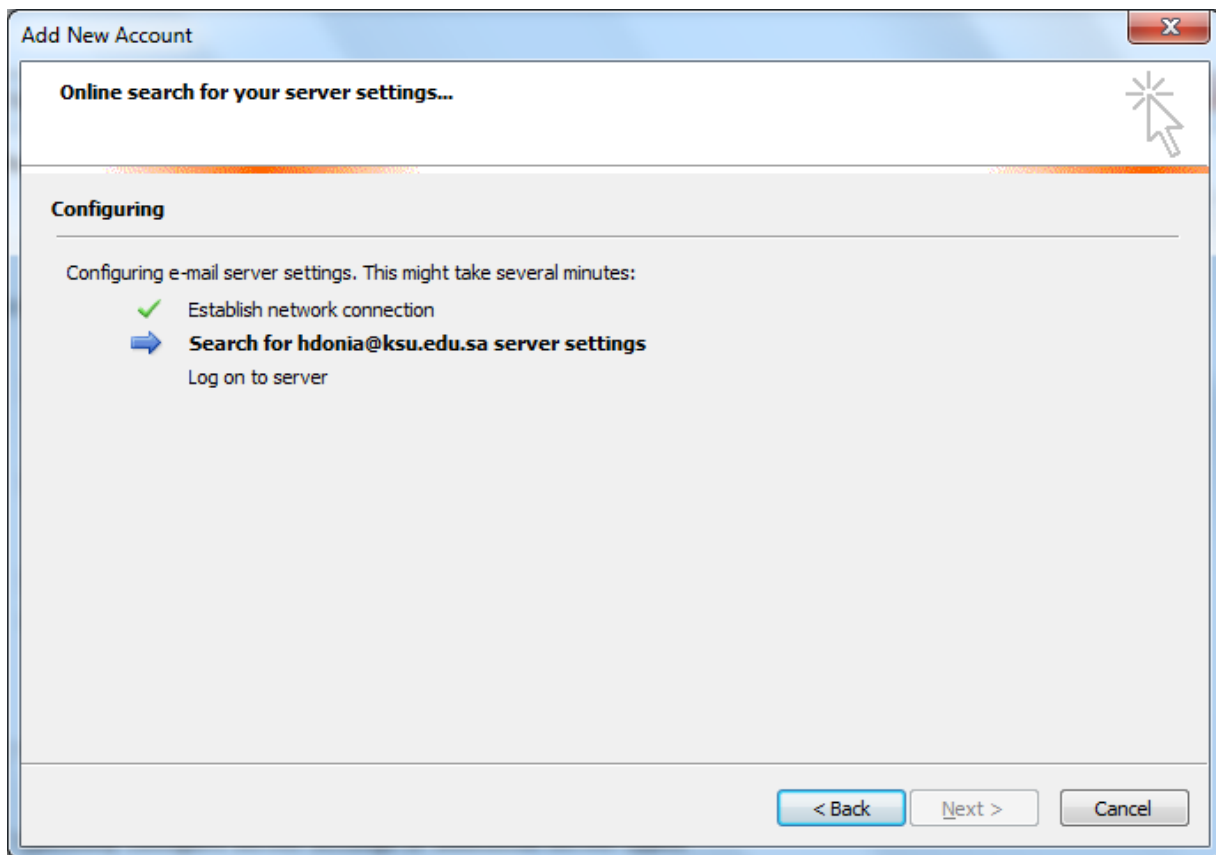
Your Name:   
Example: Ellen Adams

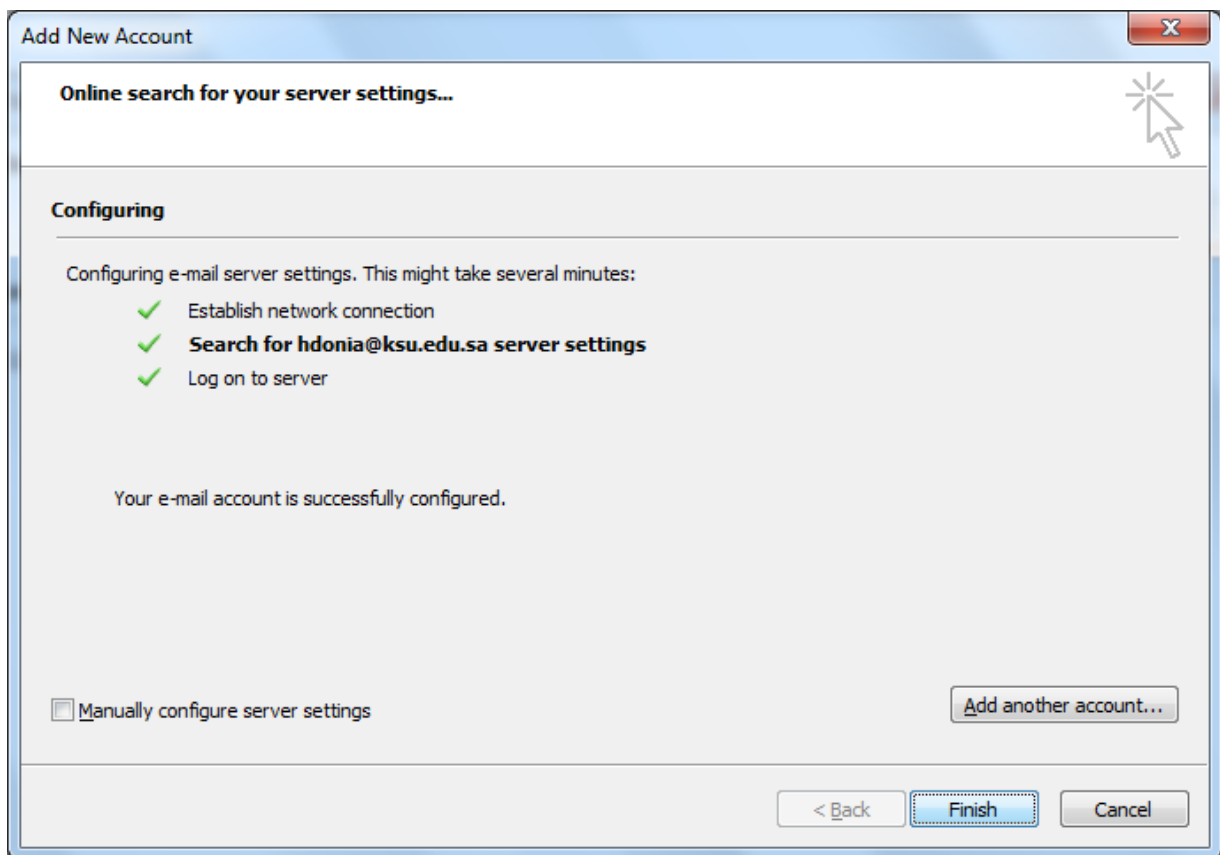
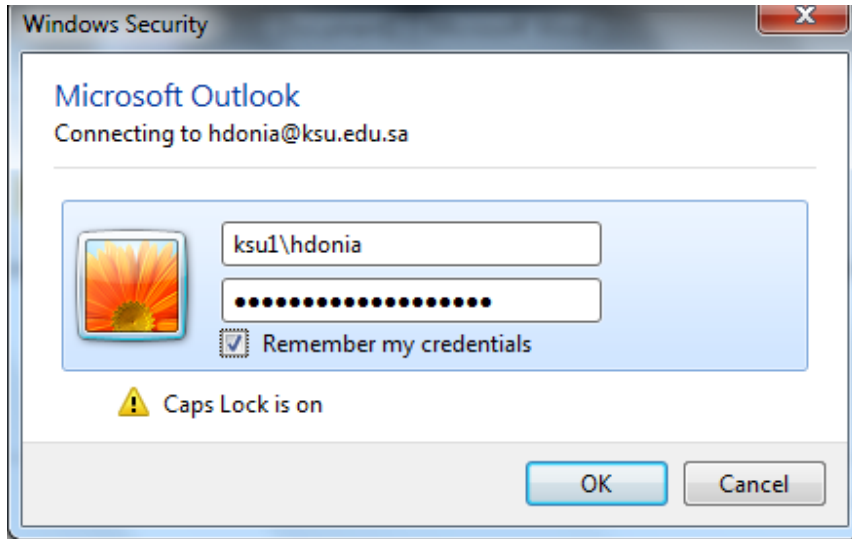
E-mail Address:   
Example: ellen@contoso.com

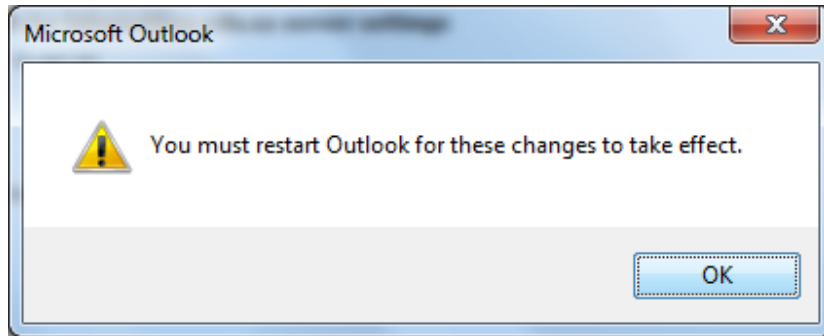
Password:   
Retype Password:   
Type the password your Internet service provider has given you.

**Text Messaging (SMS)**

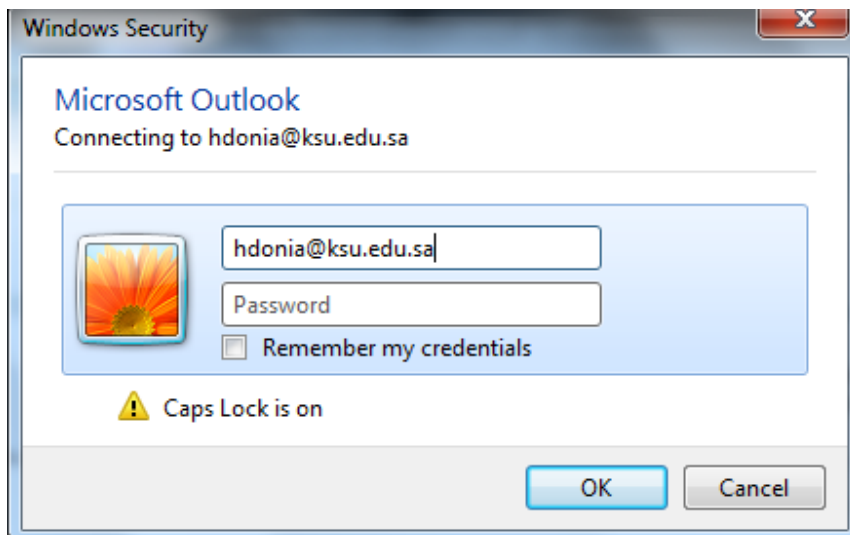
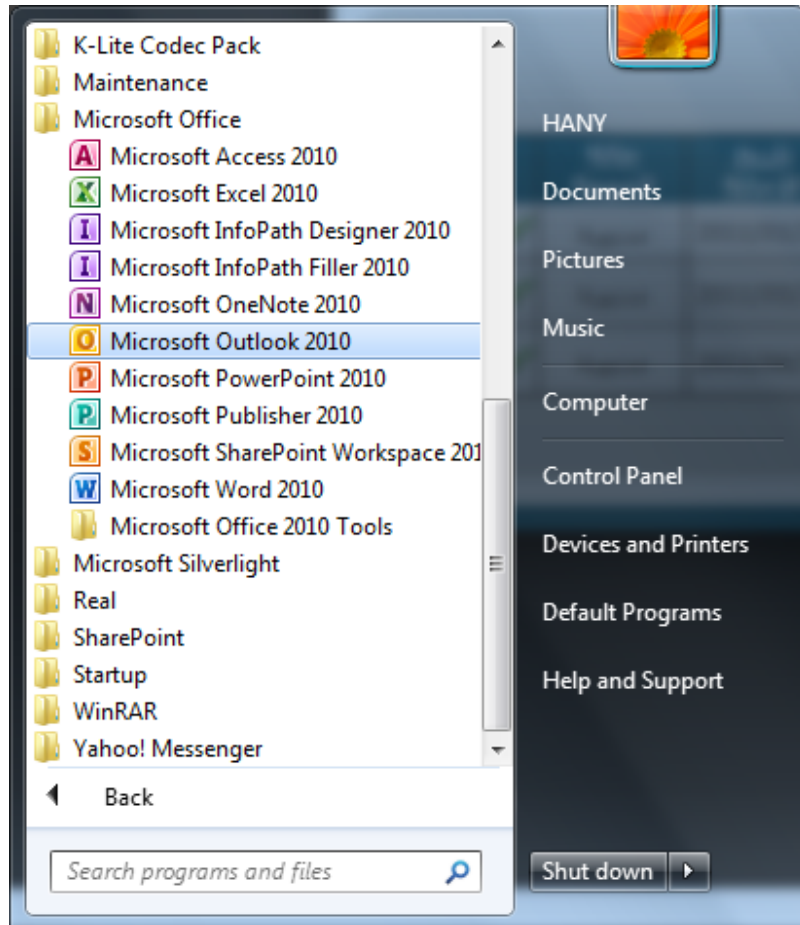
**Manually configure server settings or additional server types**



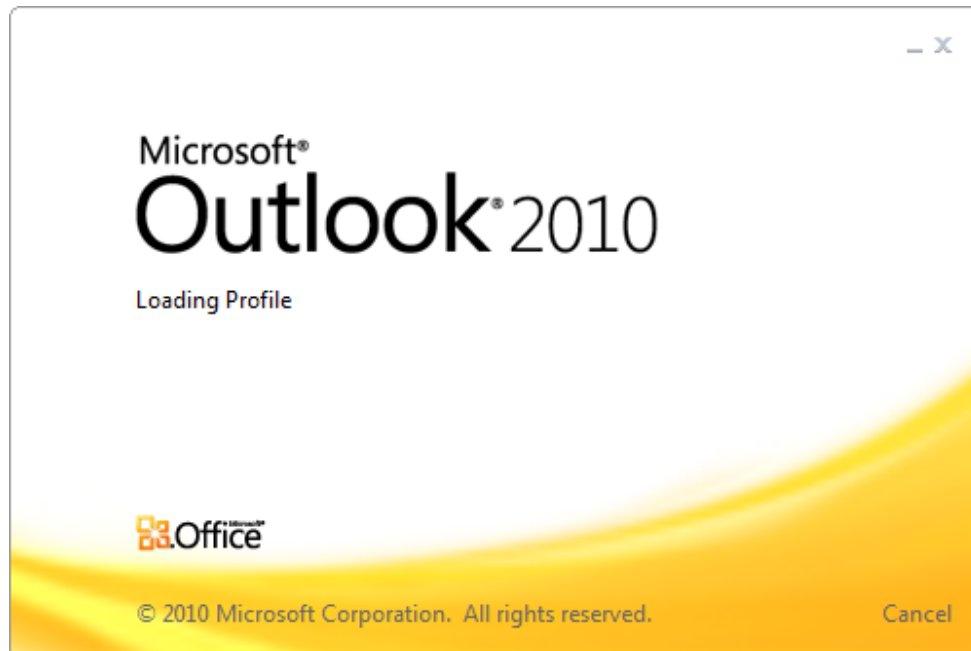
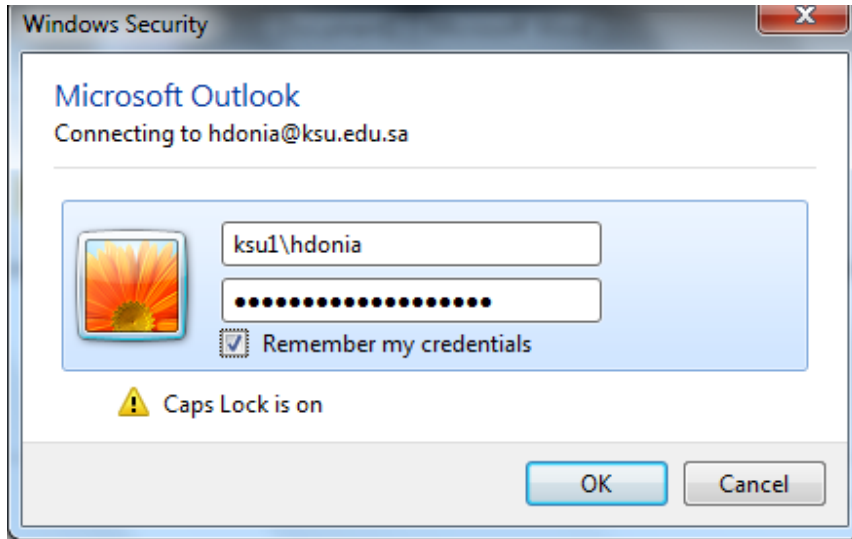




## \*Domain joined machines\*







— x

Microsoft®  
**Outlook® 2010**

Preparing Outlook for first use. (30%)  
Retrieving mailbox settings...



© 2010 Microsoft Corporation. All rights reserved.

Cancel